



**AUTOMATIC  
LABELLING  
MACHINES**

BRB GLOBUS s.r.l.  
Via Industria 20-22  
Porto Mantovano - 46047-MN  
Italy

[www.brblabelling.com](http://www.brblabelling.com) - [www.brbglobus.it](http://www.brbglobus.it)

# HISTORY

- THE COMPANY IS A FAMILY COMPANY AND IT WAS ESTABLISHED IN 1984 BY MR. ROBERTO MARCHINI AND MR. GIOVANNI REBUSTINI WITH NAME OF NUOVA B.R.B.
- IT HAD ALWAYS BEEN FOCUSED JUST ON LABELLING MACHINES



- NEW HEADQUARTER OPENED IN 2001
- SECOND GENERATION HAS TAKEN OVER THE COMPANY IN 2006 IN THE PERSONS OF ALESSANDRO MARCHINI AND ANDREA REBUSTINI AND CHANGED THE NAME OF THE COMPANY TO BRB GLOBUS



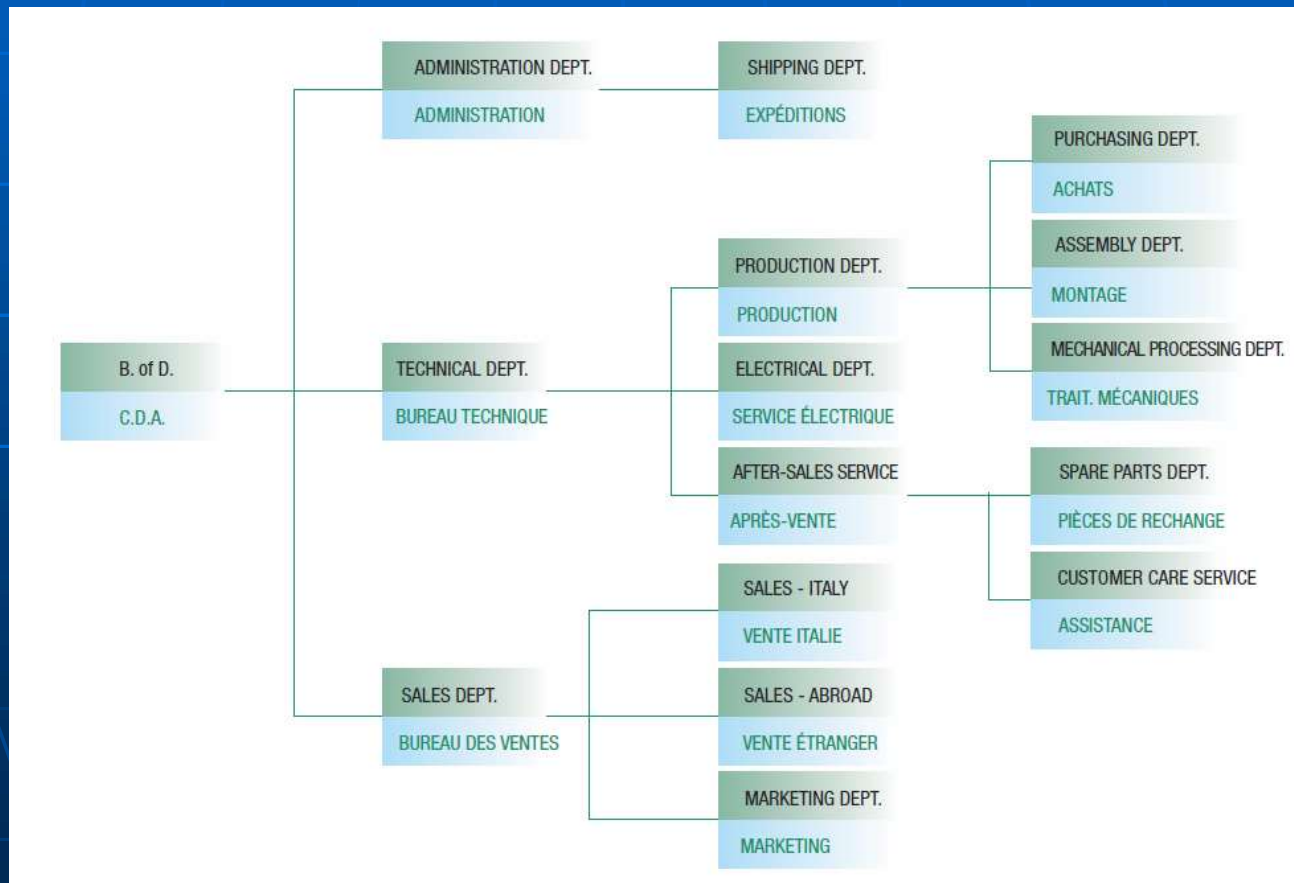
# HEAD QUARTER

- Company headquarter has been opened in 2001. BRB GLOBUS is strongly focused on sustainability, working long-term vision: the roof of our building is covered with solar panels for production of renewable energy, we have zero production of waste to landfills thanks to a separate collection of all waste produced, company cars are Hybrid or use low emission CO2 fuels



# ORGANIZATION

## ■ STAFF ORGANIZATION



# BRB GLOBUS s.r.l.

founded in 1984

- The experience acquired by decades of hard work in bottling fields, engineers and technicians of great and unquestionable experience in the labelling technology have developed state of the art automatic rotary machines. The range of labelers covers the current scenario available on the market: cold glue, hot melt, pressure sensitive and combo.
- Reliability, flexibility and efficiency are the inspiring line of BRB GLOBUS products.
- The large use of stainless steel and non-corrosive materials, the mechanical high precision of parts obtained with the most updated machining technology ( laser, sinterisation, etc.), the self-lubricating components, no tools change parts and a smart balance of electronic integration have allowed us to produce labelling machines able to operate in heavy duty conditions.
- Another important guideline for our projects has been the maximum reduction of the machine stops for maintenance operations, as well as the adoption of quick and easy changeovers and automatic reel feed change



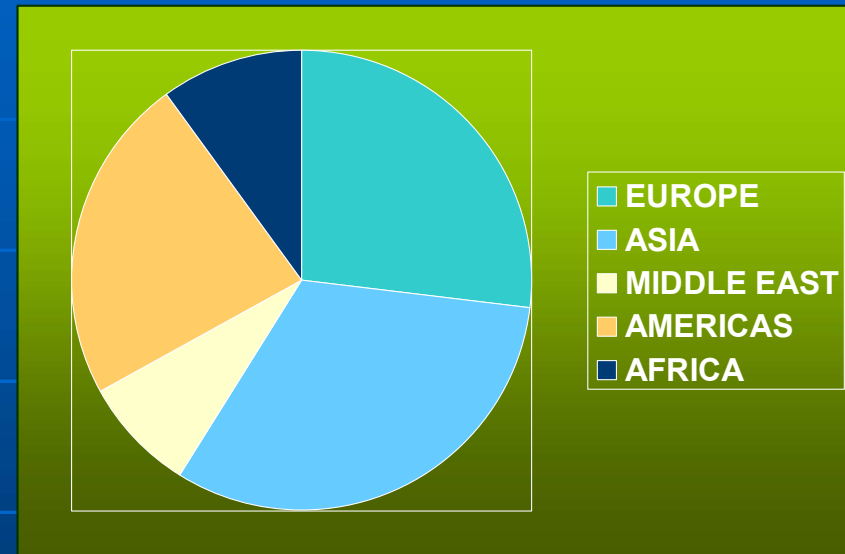
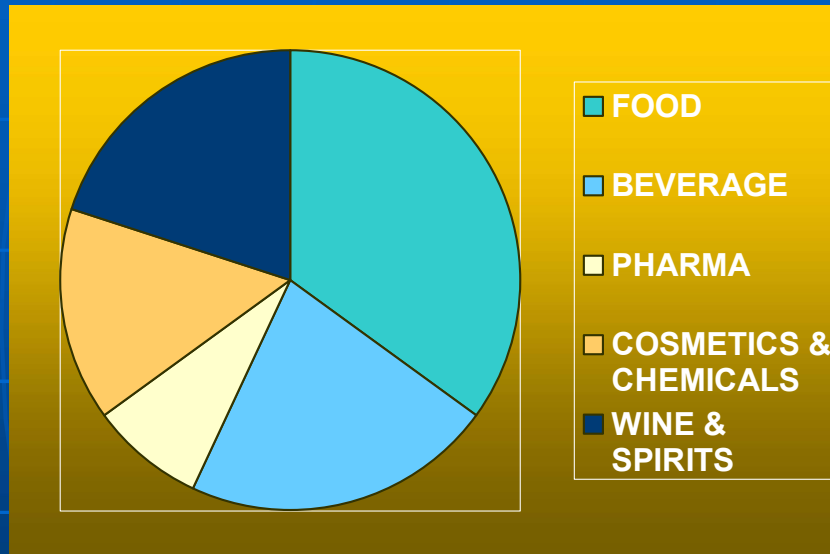
# COMPANY FIGURES

- ABOUT **50** LABELLING SYSTEMS ARE MANUFACTURED EVERY YEAR
- MORE THAN **1250** LABELLERS DELIVERED UP TODAY ALL OVER THE WORLD
- **90%** OF PRODUCTS ARE EXPORTED
- **30** EMPLOYEES
- **2.500** SQUARE METERS PRODUCTION PLANT



# MARKETS AND INDUSTRY SECTORS

( data are based on last 3 years : 2012,2013,2014)



# EXPERTISE AND COLLABORATIONS



BRB GLOBUS IS IN CONTINUOUS CONTACT WITH THE MOST IMPORTANT SUPPLIERS OF LABEL MATERIALS, GLUE AND CONSUMABLE PARTS, IN ORDER TO ASSIST CUSTOMERS IN CHOOSING THE MOST TECHNICALLY AND ECONOMICALLY EFFICIENT MATERIALS

FOR BRB GLOBUS IT IS ALSO COMMON PRACTICE TO DISCUSS AND EXCHANGE INFORMATIONS ON DIFFERENT LEVELS WITH OUR PARTNERS AND CUSTOMERS, IN ORDER TO BE ABLE TO IDENTIFY TOGETHER THE BEST SOLUTION AND TO TAILOR THE MACHINE ON SPECIFIC CUSTOMERS' NECESSITIES

WHEN CUSTOMERS BUY A BRB GLOBUS LABELLER OR A DISTRIBUTOR DECIDE TO WORK WITH BRB GLOBUS, THEY BECOME NOT ONLY A PARTNER, BUT A FAMILY MEMBER OF OUR COMPANY.





# NETWORK AND SERVICE



- BRB GLOBUS supply a complete assistance in the different phases of a project:
- consulting: during the definition of a project, the customer benefits of a constant consult of our sales people and engineers which leads to the choice of the most suitable technologies
- layout definition
- detailed technical documentation - manuals
- line integration
- start up: once order is placed for one of our labellers, the salesman is also the project manager for the project, and the main contact during designing, assembly, start up of the machine. This vertical structure facilitates the interface with customer, reduces time and makes the flow of information between customer and BRB GLOBUS smooth and efficient
- after sales during the complete life of the machine:
- diagnostic: due to our experience and expertise we have 98% diagnostic success via phone or e-mail. Remote follow up of unit performance via internet is also available if required
- preventive maintenance: preventive maintenance contract is also available and it can be provided at machine order or at start up.
- training: we are committed to provide the best training to our customer's operators before the machine is shipped, it is our goal to prepare the customer to develop an independent and efficient daily work on the machine from the first installation
- the worldwide network of BRB GLOBUS partners guarantees an efficient and dedicated support for after sale service in the different countries where BRB GLOBUS labellers are in use

# BRB GLOBUS STRENGTH POINTS

- Constant research and development for a continuous update and improvement of our range of labellers, with particular attention to customer feedback or notes.



- High flexibility to adapt machines to requirements coming from customer or specific industrial sectors
- Very interesting quality/price rate compared to competitors

# OUR PRODUCTS RANGE

- PRESSURE SENSITIVE
- PRE-CUT LABEL HOT MELT
- REEL FED HOT MELT
- CUT AND STACK (COLD GLUE)
- MODULAR
- COMBI
- ORIENTOR

# MEGA – MEGA STATIC ( cold glue )

- Speed up to 30.000 bph
- Mobile or fix label magazine
- Station on adjustable slides for different bottle diameters-sizes
- Rubber coated or aluminium glue pallets



# MEGA ADE

(pressure sensitive)

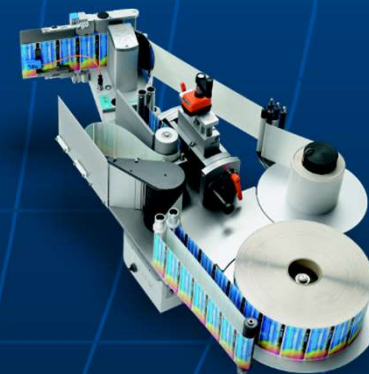
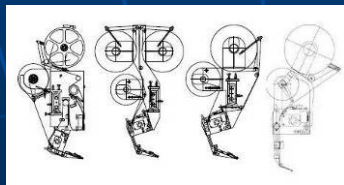


- Speed up to 30.000 bph
- Can be equipped with up to 6 applicators
- NO label look
- Zero down time system (non stop system)



# Pressure sensitive labelling station

- Manufacturer : HERMA
- Max speed 150 mt/min (60.000 l/h)
- Servo motor driven
- Motor with driver and electrics in one very compact case
- Parameters of the station can be centralised on machine HMI and controlled by the machine main touch screen



# MEGA ROLL (hot melt)

- Speed up to 36.000 bph
- Plastic labels from reel
- Complete Station adjustable slides for different bottle diameters-sizes and label positioning in height
- 4 servo motors system



# MEGA HOT (hot melt)

- Speed up to 36.000 bph
- Fix label magazine
- Pre cut OPP or paper labels
- Hot melt applicator with controlled fiberisation guns and hot melt slot gun integrated in label magazine
- hot melt applicator and melter by Meler or Nordson





# MEGA COMBO

(cold glue, pressure sensitive, hot melt)



- Speed up to 30.000 bph
- Combination of different labelling technologies
- Labelling stations are fixed on the machine basement
- Clutch on cold glue stations are available
- Available with mechanical or electronic cam for plate rotations

# MEGA FLEX

(cold glue, pressure sensitive)

- Speed up to 30.000 bph
- Labelling stations on movable trolleys
- Electronic programmable cam only
- Rubber coated or aluminium glue pallets



# ORIENTORS

- ORIENTORS FOR HIGH SPEED LASER PRINTING IN SPECIFIC WINDOWS ON PRINTED CANS
- ORIENTORS FOR OFF CENTERED NECK BOTTLES

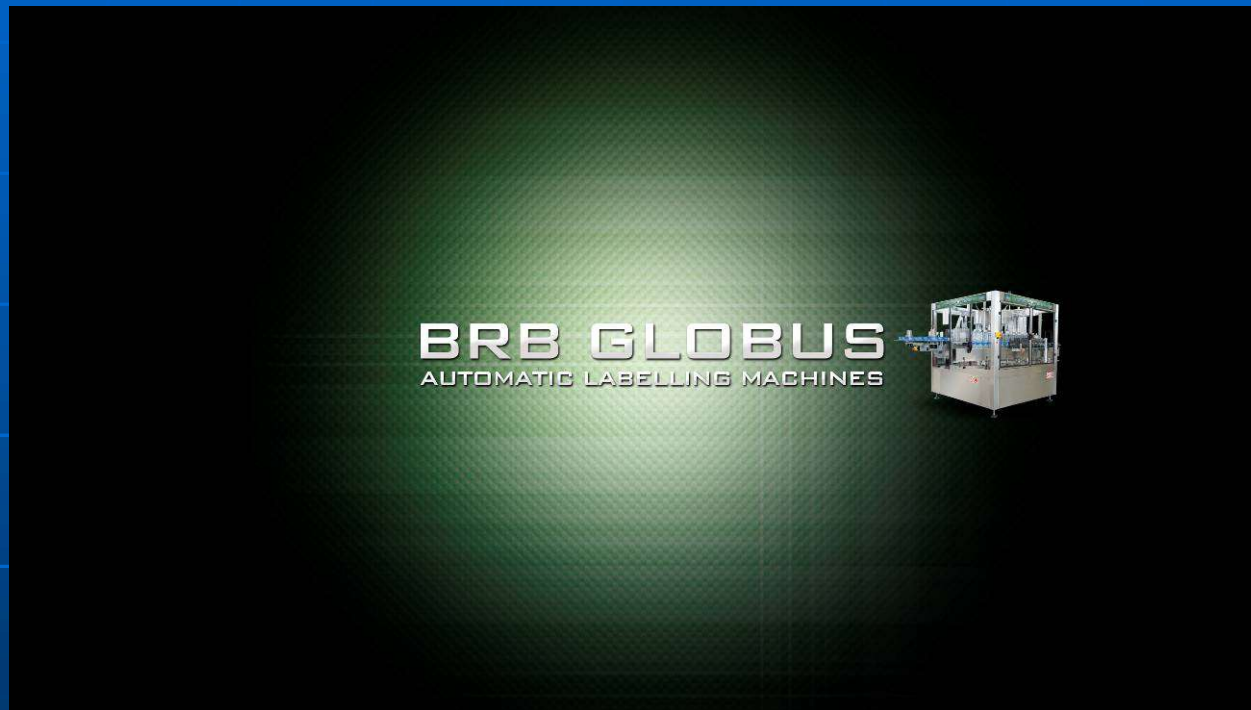


# FEATURES AND OPTIONS

## AVAILABLE ON ALL PRODUCTS

- ELECTRONIC CAM WITH SERVO DRIVEN MOTORS, PROGRAMMABLE FROM HMI
- MECHANICAL ORIENTATION SYSTEMS : NOTCH ON BOTTOM, NOTCH ON SIDE, RAMP ON BOTTOM, HANDLE, HINGE
- OPTO ELECTRONIC ORIENTATION SYSTEMS: WITH COLOR SENSORS, WITH OPTICAL FIBER, WITH SINGLE CAMERA INSPECTION
- HANDLING OF UNSTABLE CONTAINERS IN PUCKS
- OUTSERT APPLICATION WITH HOT GLUE
- CAMERA INSPECTION FOR LABELLING QUALITY CONTROL WITH VARIOUS REJECT SYSTEMS
- INK JET, HOT FOIL, LASER CODERS INTEGRATION

THANK YOU FOR YOUR ATTENTION!



LET'S WORK TOGETHER!

