



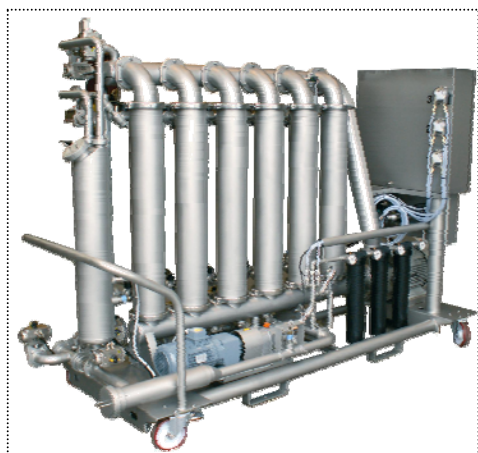
Flavy FX 5 / 6 / 8 / 10



Flavy FX 6

The new Flavy FX 5 and FX 6 filter range is the best answer to large wineries and co - operatives.

- Respect of the wine organoleptic quality as structure, color, aromas...
- Minimal wine losses thanks to the inert gas "pushing process".
- Decrease of the wine oxidation thanks to the absence of oxygen in the filter unit.
- Fully automatic filtration process, including the resumption of the retentate filtration when using an external tank (in option).
- Optimized price per gallon or per liter.
- Dead volumes designed to reduce wine losses and water consumption.



Flavy FX6

Technical characteristics

Model	Number of modules	Filtration surface (m ²)	Length (mm)	Height (mm)	Width (mm)	Empty weight (kg)	Power (kw)
FX 5	5	60	2922	990	1939	750	17.2
FX 6	6	72	2922	990	1939	800	17.2
FX 8	8	96	2966	1200	2120	1000	23
Fx 10	10	120	3242	1200	2120	1200	25

Fitting dimensions

- Wine in / out: DIN 50
- Retentate and back flush output: DIN 50
- Water fittings : F 1 ¼ " Gaz
- Air / Nitrogen fittings : 10 bar, F ¼ " Gaz
- Equipression fittings : F ¾ " Gaz

Average flows obtained during trials

Wines	FX 5	FX 6	Fx 8	Fx 10
Dry white wine	60 hl/h	72 hl/h	96 hl/h	120 hl/h
Gross Rose wine	35 hl/h	42 hl/h	56 hl/h	70 hl/h
Gross red wine	30 hl/h	36 hl/h	48 hl/h	60 hl/h
Prefiltered red wine	55 hl/h	66 hl/h	88 hl/h	110 hl/h

Options

- Dosing pump for chemicals
- Turbidimeter
- Water filters
- Sparkling wines
- Automatic resumption of external tank
- Additional module to transform a Flavy FX 5 into a FX 6 filter
- For FX 8 and FX 10, retentate tank built on for VT or VE version



Sight-glasses and isolating handles of modules

Distributed by :

Bucher Vaslin

Rue Gaston Bernier – BP 70028
F - 49290 Chalonnes sur Loire
Tél. +33 (0)2 41 74 50 50
Fax +33 (0)2 41 74 50 51
E-mail : commercial@buchervaslin.com

www.buchervaslin.com
Your success is our priority